

GIRLS' SWEET 16 CHAMPIONSHIP

Quarterfinals

Russell County

vs.

Warren East

March 26, 1993

Official Boxscore *** FINAL ***

Date: 03-26-93 Site:GIRLS STATE TOURNEY GM 12

VISITORS (Last Name, First)

NO.	WARREN EAST	Tot FG		3-POINT		FT		Rebounds			PF	TP	A	TO	BLK	S	TIME		
		FG	FGA	FG	FGA	FT	FTA	OFF	DEF	TOT									
03	RATLIFF, DEANNA	0	0	0	0	0	0	0	0	0	1	0	0	1	0	0	7:56		
30	ELROD, HEATHER	8	15	0	0	4	4	1	3	4	2	20	2	1	0	1	29:38		
42	BRITT, JAMIE	3	11	0	0	0	0	3	1	4	3	6	0	2	0	2	24:43		
14	SMITH, ALISON	3	10	0	3	2	4	2	2	4	1	8	4	0	0	1	25:41		
20	MASSEY, MIRANDA	3	8	1	1	2	4	3	3	6	1	9	2	2	0	1	26:49		
44	COLE, TRACY	3	9	0	0	0	0	3	1	4	3	6	3	1	0	0	20:17		
12	HIBBITT, RHONDA	0	1	0	0	2	2	1	0	1	0	2	1	0	0	0	10:40		
34	FISHBACK, TRESIE	2	3	0	0	0	0	1	1	2	0	4	0	0	0	0	7:47		
54	TALLEY, S.	2	3	0	0	0	0	1	1	2	0	4	0	0	0	2	6:15		
21	CHERRY, MANDY	0	0	0	0	0	0	0	0	0	0	0	0	0	0	0	0:7		
50	BARRICK, HOLLY	0	0	0	0	0	0	0	0	0	0	0	0	0	0	0	0:7		
TEAM REBOUNDS (INCLUDED IN TOTALS)																			
TOTALS		24	60	1	4	10	14	18	14	32	11	59	12	7	0	7	160		
TOTAL FG 1st HALF 4/16 25.0%		2nd HALF 20/44 45.5% GAME		24/60 40.0%		DEADBALL		3											
3-POINT FG 1st HALF 0/0 0.0%		2nd HALF 1/4 25.0% GAME		1/4 25.0%		REBOUNDS		3											
FREE THROWS 1st HALF 3/4 75.0%		2nd HALF 7/10 70.0% GAME		10/14 71.4%															

HOME (Last Name, First)

NO.	RUSSELL COUNTY	Tot FG		3-POINT		FT		Rebounds			PF	TP	A	TO	BLK	S	TIME		
		FG	FGA	FG	FGA	FT	FTA	OFF	DEF	TOT									
20	LOY, BEBBIE	6	11	0	0	4	4	3	7	10	1	16	1	4	3	1	31:53		
50	HIGGINBOTHAM, S.	7	15	1	4	2	3	0	7	7	3	17	2	4	2	2	31:53		
33	REXROAT, KELLY	1	2	0	0	0	0	0	1	1	4	2	0	3	0	0	17:27		
22	BECK, DUCHIE	1	5	0	2	0	0	2	2	4	4	2	0	2	1	0	30:48		
34	McFARLAND, K.	1	2	0	0	0	0	0	0	0	1	2	2	4	0	0	26:36		
44	MORRIS, COURTNEY	2	2	0	0	1	2	1	0	1	1	5	0	1	0	0	10:45		
42	POPPLEWELL, JILL	0	1	0	0	0	0	0	0	0	0	0	0	1	0	0	3:55		
32	MILLER, ANGIE	0	0	0	0	0	0	1	1	2	0	0	1	1	0	0	5:17		
03	NEWBY, CHERYL	0	0	0	0	0	0	0	1	1	1	0	0	1	0	0	1:07		
14	CAMPBELL, JACKIE	1	1	1	1	0	0	0	0	0	0	3	0	0	0	0	0:7		
10	COOPER, SARAH	0	0	0	0	0	0	0	0	0	0	0	0	0	0	0	0:7		
23	BASTIN, AMANDA	0	0	0	0	0	0	0	0	0	0	0	0	0	0	0	0:7		
TEAM REBOUNDS (INCLUDED IN TOTALS)																			
TOTALS		19	39	2	7	7	9	8	19	27	15	47	7	21	6	3	160		
TOTAL FG 1st HALF 4/8 50.0%		2nd HALF 15/31 48.4% GAME		19/39 48.7%		DEADBALL		0											
3-POINT FG 1st HALF 0/2 0.0%		2nd HALF 2/5 40.0% GAME		2/7 28.6%		REBOUNDS		0											
FREE THROWS 1st HALF 0/0 0.0%		2nd HALF 7/9 77.8% GAME		7/9 77.8%															

OFFICIALS: LAURA PETRIE, LEWIS COOK, ALT.-T. HALL
 Technicals: None

SCORE BY PERIODS					
WARREN EAST	11	17	13	18	= 59
RUSSELL COUNTY	8	7	18	14	= 47

Attendance: 4,565

COMMENTS:	POINTS OFF TURNOVERS	SECOND CHANCE POINTS
WARREN EAST	20	12
RUSSELL COUNTY	2	7

Produced by the KHSAA Sweet Sixteen Stat Crew with FINAL III - a Product of LEXICON SPORTS®

WARREN EAST "LADY RAIDERS" vs RUSSELL COUNTY "LAKERS"
2nd Half Play by Play

Tip off at 9:00 p.m. on 03/26/93 at GIRLS STATE TOURNEY GM 12
Produced by the KHSAA Sweet Sixteen Stat Crew with FINAL III - a Product of LEXIC

PAGE : 2

Player	Team	RUSSELL COUNTY	Time	Score	WARREN EAST	Player	Team
LOY, DEBBIE, HIGGINBOTHAM, S., MILLER, ANGIE, BECK, DUCHIE, MORRIS, COURTNEY			FISHBACK, TRESIE, SMITH, ALISON, TALLEY, S., ELROD, HEATHER, HIBBITT, RHONDA				
			4 6:24	33-43*	6 ft Lane Jump shot by SMITH, ALISON	3-9	33.3% 18-51 35.2%
REB: 21 A: 6 BLK: 6 TO: 17 PF: 4 S: 3 FT: 6-8 75.0% FG: 13-29 44.8%			4 5:56		WARREN EAST No. 1	REB: 30 A: 8 BLK: 0 TO: 7 PF: 6 S: 6 FT: 6-8 75.0% FG: 18-51 35.2%	
Sub In: McFARLAND, K. Out: MILLER, ANGIE			4 5:56				
Sub In: REXROAT, KELLY Out: MORRIS, COURTNEY			4 5:56				
			4 5:40	33-45*	12 ft Lane Jump shot by ELROD, HEATHER	5-12	41.6% 19-52 36.5%
					Assist by SMITH, ALISON	2	9
Sub In: MASSEY, MIRANDA Out: HIBBITT, RHONDA			4 5:30				
Sub In: BRITT, JAMIE Out: FISHBACK, TRESIE			4 5:28				
Sub In: COLE, TRACY Out: TALLEY, S.			4 5:26				
6-12	50.0%	14-30 46.6%	13 ft Right Side Jump shot by HIGGINBOTHAM, S.	4 5:26	*35-45		
1-2	50.0%	15-31 48.3%	14 ft Left Angle Jump shot by McFARLAND, K.	4 5:07	35-47*	2 ft Lane Jump shot by BRITT, JAMIE	3-11 27.2% 20-53 37.7%
3		5	Foul on BECK, DUCHIE	4 4:51	*37-47		
			4 4:34				
			4 4:28	37-49*	14 ft Right Side Jump shot by ELROD, HEATHER	6-13	46.1% 21-55 38.1%
					Assist by SMITH, ALISON	3	10
1-5	20.0%	16-32 50.0%	8 ft Lane Jump shot by BECK, DUCHIE	4 4:16	*39-49		
4		6	Foul on REXROAT, KELLY	4 3:58			
			4 3:58	39-51*	ELROD, HEATHER, 2 Free Throws made both	4-4	100% 8-10 80.0%
4		7	Foul on BECK, DUCHIE	4 3:30			
			4 3:30		SMITH, ALISON, 2 Free Throws missed both	0-2	00.0% 8-12 66.6%
Sub In: NEWBY, CHERYL Out: BECK, DUCHIE			4 3:30				
			4 3:14	39-53*	4 ft Lane Jump shot by ELROD, HEATHER	7-14	50.0% 22-56 39.2%
1		8	Foul on NEWBY, CHERYL	4 2:23			
Sub In: BECK, DUCHIE Out: NEWBY, CHERYL			4 2:23				
			4 2:23	39-55*	SMITH, ALISON, 1 & Bonus made both	2-4	50.0% 10-14 71.4%
			4 1:46	39-57*	2 ft Lane Jump shot by ELROD, HEATHER	8-15	53.3% 23-58 39.6%
					Assist by COLE, TRACY	3	11
6-10	60.0%	17-35 48.5%	6 ft Left Base Line Jump shot by LOY, DEBBIE	4 1:28	*41-57		
7-14	50.0%	18-36 50.0%	9 ft Left Side Driving by HIGGINBOTHAM, S.	4 0:43	*43-57		
			4 0:43		Foul on ELROD, HEATHER	2	7
			4 0:43				
Sub In: MORRIS, COURTNEY Out: REXROAT, KELLY			4 0:43				
			4 0:43		Sub In: TALLEY, S. Out: COLE, TRACY		
			4 0:43		Sub In: FISHBACK, TRESIE Out: ELROD, HEATHER		
			4 0:43		Sub In: RATLIFF, DEANNA Out: MASSEY, MIRANDA		
2-3	66.6%	7-9 77.7%	HIGGINBOTHAM, S., 1 Free Throw made	4 0:43	*44-57		
			4 0:26	44-59*	Driving Layup by FISHBACK, TRESIE	2-3	66.6% 24-60 40.0%
					Assist by SMITH, ALISON	4	12
Sub In: REXROAT, KELLY Out: HIGGINBOTHAM, S.			4 0:07				
Sub In: POPPLEWELL, JILL Out: LOY, DEBBIE			4 0:07				
Sub In: CAMPBELL, JACKIE Out: McFARLAND, K.			4 0:07				
			4 0:07		Sub In: CHERRY, MANDY Out: SMITH, ALISON		
Sub In: COOPER, SARAH Out: MORRIS, COURTNEY			4 0:07				
Sub In: BASTIN, AMANDA Out: BECK, DUCHIE			4 0:07				
1-1	100%	19-39 48.7%	3 pt 19 ft Right Angle Jump shot by CAMPBELL, JACKIE, made	4 0:00	*47-59		
					Sub In: BARRICK, HOLLY Out: BRITT, JAMIE		

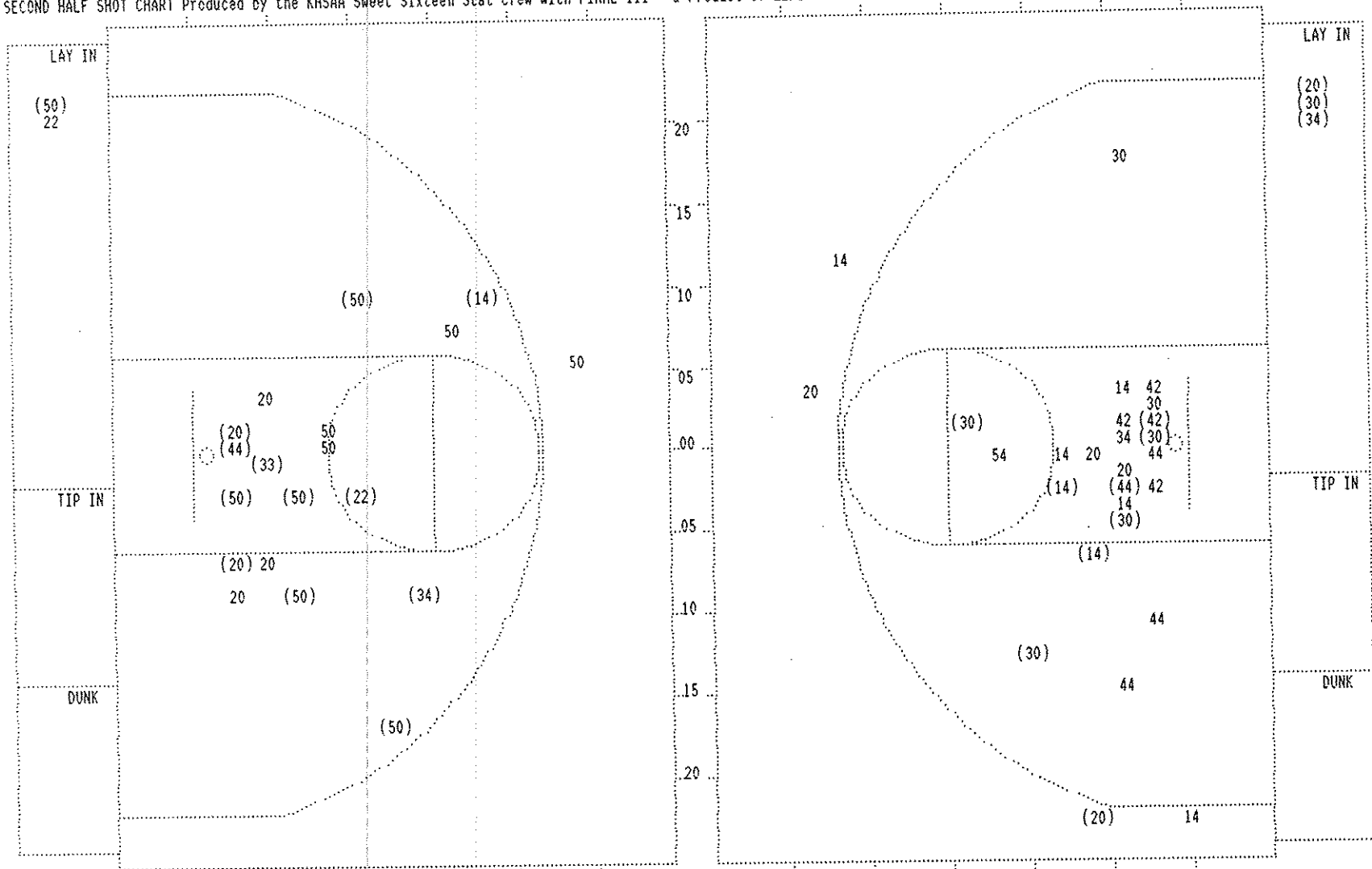
WARREN EAST "LADY RAIDERS" vs RUSSELL COUNTY "LAKERS"
2nd Half Play by Play

Tip off at 9:00 p.m. on 03/26/93 at GIRLS STATE TOURNEY GM 12
Produced by the KHSAA Sweet Sixteen Stat Crew with FINAL III - a Product of LEXICON

PAGE : 1

RUSSELL COUNTY				Time	Score	WARREN EAST	Player	Team
LOY, DEBBIE	HIGGINBOTHAM, S.	REXROAT, KELLY	BECK, DUCHIE	MCFARLAND, K.				
2-6	33.3%	7-19	36.8%	Layup Off Fast Break by HIGGINBOTHAM, S.	3	7:45	*17-28	
1-2	50.0%	8-20	40.0%	2 ft Lane Turnaround by REXROAT, KELLY	3	7:14	*19-28	
				Assist by LOY, DEBBIE				
				Foul on REXROAT, KELLY	3	7:03		
					3	6:47		
					3	6:47		
					3	6:47	*21-28	
					3	6:23		
					3	6:20		
3-7	42.8%	9-21	42.8%	19 ft Left Side Jump shot by HIGGINBOTHAM, S.	3	6:19	21-31*	3 pt 22 ft Right Side Jump shot by MASSEY, MIRANDA
				Foul on BECK, DUCHIE				2-4 50.0% 13-33 39.3%
				Foul on HIGGINBOTHAM, S.				2 7
				Assist by ELROD, HEATHER				
5-7	71.4%	10-22	45.4%	2 ft Lane Jump shot by LOY, DEBBIE	3	5:59	*23-31	
				Assist by HIGGINBOTHAM, S.				
					3	4:53		
					3	4:53	*24-31	Foul on COLE, TRACY
1-1	100%	3-3	100%	HIGGINBOTHAM, S., 1 Free Throw made	3	4:54	*26-31	
4-8	50.0%	11-23	47.8%	4 ft Lane Turnaround by HIGGINBOTHAM, S.	3	4:41	26-33*	3 ft Lane Jump shot by COLE, TRACY
				Sub In: MORRIS, COURTNEY Out: REXROAT, KELLY	3	4:12		3-7 42.8% 14-38 36.8%
				Sub In: MILLER, ANGIE Out: MCFARLAND, K.	3	3:13		
					3	2:55		
					3	2:55		Foul on COLE, TRACY
					3	2:55	*27-33	Sub In: HIBBITT, RHONDA Out: SMITH, ALISON
1-2	50.0%	4-5	80.0%	MORRIS, COURTNEY, 2 Free Throws made 1st missed 2nd	3	2:53		
					3	2:53		Foul on BRITT, JAMIE
					3	2:53		Sub In: FISHBACK, TRESIE Out: BRITT, JAMIE
					3	2:53	*29-33	
4-4	100%	6-7	85.7%	LOY, DEBBIE, 2 Free Throws made both	3	2:41	29-35*	Driving Layup by MASSEY, MIRANDA
					3	2:13	*31-35	3-7 42.8% 15-43 34.8%
5-10	50.0%	12-25	48.0%	2 ft Lane Driving by HIGGINBOTHAM, S.	3	2:13		
					3	2:13		Foul on COLE, TRACY
1-2	50.0%	6-8	75.0%	HIGGINBOTHAM, S., 1 Free Throw missed	3	2:13		
					3	1:57	31-37*	Driving Layup by ELROD, HEATHER
								Assist by COLE, TRACY
					3	1:43	*33-37	4-11 36.3% 16-44 36.3%
								2 8
2-2	100%	13-26	50.0%	2 ft Lane Jump shot by MORRIS, COURTNEY	3	1:13		
				Assist by MILLER, ANGIE				
				Foul on LOY, DEBBIE	3	1:13		
					3	1:13	33-39*	Sub In: BRITT, JAMIE Out: COLE, TRACY
					3	0:22		HIBBITT, RHONDA, 2 Free Throws made both
					3	0:22		Foul on BRITT, JAMIE
					3	0:22		Sub In: TALLEY, S. Out: BRITT, JAMIE
					3	0:22		Sub In: SMITH, ALISON Out: MASSEY, MIRANDA
					3	0:05	33-41*	7 ft Lane Jump shot by SMITH, ALISON
								2-6 33.3% 17-47 36.1%

SECOND HALF SHOT CHART Produced by the KHSAA Sweet Sixteen Stat Crew with FINAL III - a Product of LEXICON SPORTS™



RUSSELL COUNTY					
Player			Player		
20 - LOY, DEBBI	2/5	40.0%	14 - CAMPBELL, J	1/1	100.0%
50 - HIGGINBOTH	6/10	60.0%	44 - MORRIS, COU	1/1	100.0%
33 - REXROAT, K	1/1	100.0%			
22 - BECK, DUCH	1/2	50.0%			
34 - McFARLAND	1/1	100.0%			
Layups	1-9 Ft	10-15 Ft	Over 15 Ft	3 Pointers	Total
1/2	8/12	2/2	1/2	1/3	13/21
50.0%	66.7%	100.0%	50.0%	33.3%	61.9%

WARREN EAST					
Player			Player		
30 - ELROD, HEA	5/7	71.4%	44 - COLE, TRAC	1/4	25.0%
42 - BRITT, JAM	1/4	25.0%	54 - TALLEY, S.	0/1	0.0%
14 - SMITH, ALI	2/7	28.5%			
20 - MASSEY, MI	2/5	40.0%			
34 - FISHBACK, T	1/2	50.0%			
Layups	1-9 Ft	10-15 Ft	Over 15 Ft	3 Pointers	Total
3/3	6/17	2/5	0/2	1/3	12/30
100.0%	35.3%	40.0%	0.0%	33.3%	40.0%

Official: Boxscore * OFFICIAL FIRST HALF *

Date: 03-26-93 Site: GIRLS STATE TOURNEY GM 12

VISITORS (Last Name, First)

NO.	WARREN EAST	Tot FG		3-POINT		FT	FTA	Rebounds			PF	TP	A	TO	BLK	S	TIME
		FG	FGA	FG	FGA			OFF	DEF	TOT							
03	RATLIFF, DEANNA	0	0	0	0	0	0	0	0	0	0	0	1	0	0	6:00	
30	ELROD, HEATHER	3	8	0	0	2	2	1	2	3	1	8	1	0	1	14:21	
42	BRITT, JAMIE	2	7	0	0	0	0	2	1	3	1	4	0	0	2	13:24	
14	SMITH, ALISON	1	3	0	1	0	0	0	2	2	1	2	1	0	0	12:21	
20	MASSEY, MIRANDA	1	3	0	0	2	4	2	2	4	1	4	2	0	0	14:24	
44	COLE, TRACY	2	5	0	0	0	0	1	1	2	0	4	1	0	0	10:00	
12	HIBBITT, RHONDA	0	1	0	0	0	0	1	0	1	0	0	1	0	0	5:15	
34	FISHBACK, TRESIE	1	1	0	0	0	0	0	0	0	0	2	0	0	0	1:39	
54	TALLEY, S.	2	2	0	0	0	0	1	1	2	0	4	0	0	0	2:36	
TEAM REBOUNDS (INCLUDED IN TOTALS)																	
TOTALS		12	30	0	1	4	6	9	11	20	4	28	6	5	0	5	80

TOTAL FG	1st HALF	4/16	25.0%	2nd HALF	8/14	57.1%	GAME	12/30	40.0%	DEADBALL	
3-POINT FG	1st HALF	0/0	0.0%	2nd HALF	0/1	0.0%	GAME	0/1	0.0%	REBOUNDS	2
FREE THROWS	1st HALF	3/4	75.0%	2nd HALF	1/2	50.0%	GAME	4/6	66.7%		

HOME (Last Name, First)

NO.	RUSSELL COUNTY	Tot FG		3-POINT		FT	FTA	Rebounds			PF	TP	A	TO	BLK	S	TIME
		FG	FGA	FG	FGA			OFF	DEF	TOT							
20	LOY, DEBBIE	4	6	0	0	2	2	0	2	2	0	10	0	1	3	1	16:00
50	HIGGINBOTHAM, S.	1	5	1	2	0	0	0	5	5	2	3	1	3	2	1	16:00
33	REXROAT, KELLY	0	1	0	0	0	0	0	0	0	2	0	0	1	0	0	8:19
22	BECK, DUCHIE	0	3	0	2	0	0	1	2	3	1	0	0	2	1	0	16:00
34	McFARLAND, K.	0	1	0	0	0	0	0	0	0	1	0	2	3	0	0	16:00
44	MORRIS, COURTNEY	1	1	0	0	0	0	0	0	0	1	2	0	0	0	0	3:53
42	POPPLEWELL, JILL	0	1	0	0	0	0	0	0	0	0	0	0	1	0	0	3:48
TEAM REBOUNDS (INCLUDED IN TOTALS)																	
TOTALS		6	18	1	4	2	2	1	9	10	7	15	3	11	6	2	80

TOTAL FG	1st HALF	4/8	50.0%	2nd HALF	2/10	20.0%	GAME	6/18	33.3%	DEADBALL	
3-POINT FG	1st HALF	0/2	0.0%	2nd HALF	1/2	50.0%	GAME	1/4	25.0%	Rebounds	0
FREE THROWS	1st HALF	0/0	0.0%	2nd HALF	2/2	100.0%	GAME	2/2	100.0%		

OFFICIALS: LAURA PETRIE, LEWIS COOK, ALT. - T. HALL
 Technicals: None

SCORE BY PERIODS

WARREN EAST	11	17	=	28
RUSSELL COUNTY	8	7	=	15

Attendance: 4,565

COMMENTS:	POINTS OFF TURNOVERS	WARREN EAST	10	RUSSELL COUNTY	0	WARREN EAST	8	RUSSELL COUNTY	0
-----------	----------------------	-------------	----	----------------	---	-------------	---	----------------	---

Produced by the KHSAA Sweet Sixteen Stat Crew with FINAL III - a Product of LEXICON SPORTS*

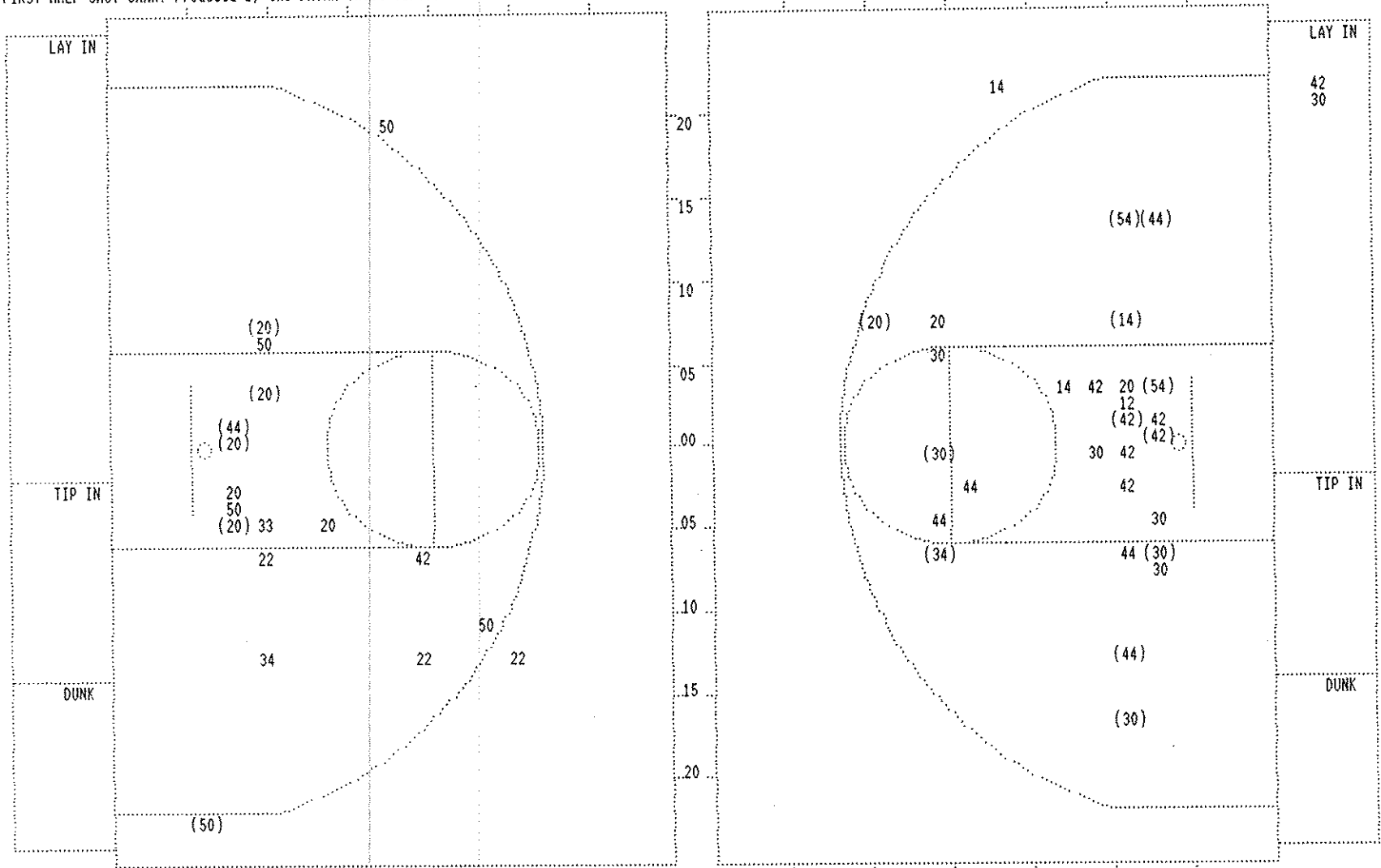
Player	Team	RUSSELL COUNTY		
LOY, DEBBIE, HIGGINBOTHAM, S., REXROAT, KELLY, BECK, DUCHIE, McFARLAND, K.				
1-1	100%	1-1	100%	8 ft Right Side Jump shot by LOY, DEBBIE
2-2	100%	2-2	100%	4 ft Lane Jump shot by LOY, DEBBIE
1		1		Foul on REXROAT, KELLY
Sub In: MORRIS, COURTNEY Out: REXROAT, KELLY				
1-1	100%	3-6	50.0%	2 ft Lane Turnaround by MORRIS, COURTNEY
1		1		Assist by McFARLAND, K.
3-4	75.0%	4-7	57.1%	4 ft Lane Jump shot by LOY, DEBBIE
1		2		Assist by HIGGINBOTHAM, S.
1		3		Foul on McFARLAND, K.
Sub In: REXROAT, KELLY Out: MORRIS, COURTNEY				
1		4		Foul on HIGGINBOTHAM, S.

Time	Score	WARREN EAST	Player	Team
RATLIFF, DEANNA, ELROD, HEATHER, BRITT, JAMIE, SMITH, ALISON, MASSEY, MIRANDA				
Ball to LADY RAIDERS				
1 7:51	0-2*	14 ft Lane Jump shot by ELROD, HEATHER	1-1	100% 1-1 100%
1 7:37	*2-2			
1 7:08	*4-2			
1 5:56				
1 5:34	4-4*	6 ft Lane Jump shot by ELROD, HEATHER	2-2	100% 2-6 33.3%
1 5:07		Foul on MASSEY, MIRANDA	1	1
1 5:07				
1 4:08				
1 3:48	*6-4			
1 3:16	6-6*	2 ft Lane Follow by BRITT, JAMIE	1-6	16.6% 3-12 25.0%
1 2:43	*8-6			
1 2:00		Sub In: COLE, TRACY Out: RATLIFF, DEANNA		
1 2:00		Sub In: HIBBITT, RHONDA Out: SMITH, ALISON		
1 1:14				
1 1:14				
1 1:14	8-8*	ELROD, HEATHER, 2 Free Throws made both	2-2	100% 2-2 100%
1 0:59	8-10*	20 ft Left Angle Jump shot by MASSEY, MIRANDA	1-2	50.0% 4-14 28.5%
Assist by HIBBITT, RHONDA				
1 0:09			1	1
1 0:09	8-11*	MASSEY, MIRANDA, 1 Free Throw made	1-1	100% 3-3 100%
1 0:08		MASSEY, MIRANDA, 1 Free Throw missed	1-2	50.0% 3-4 75.0%

WARREN EAST "LADY RAIDERS" vs RUSSELL COUNTY "LAKERS"
1st Half Play by Play

Player	Team	RUSSELL COUNTY	Time	Score	WARREN EAST	Player	Team
LOI, DEBBIE, HIGGINBOTHAM, S., REXROAT, KELLY, BECK, DUCHIE, McFARLAND, K. Ball to LAKERS			FISHBACK, TRESIE, BRITT, JAMIE, MASSEY, MIRANDA, HIBBITT, RHONDA, COLE, TRACY				
1-2	50.0%	5-10 50.0%	2 7:27	8-13*	3 ft Lane Jump shot by BRITT, JAMIE	2-7	28.5% 5-17 29.4%
2	3	3 pt 22 ft Left Base Line Jump shot by HIGGINBOTHAM, S. Assist by McFARLAND, K.	2 6:59	*11-13			
4-5	80.0%	6-11 54.5%	2 6:27	11-15*	15 ft Lane Jump shot by FISHBACK, TRESIE Assist by MASSEY, MIRANDA	1-1	100% 6-18 33.3%
2-2	100%	2-2 100%	2 6:21		Sub In: ELROD, HEATHER Out: FISHBACK, TRESIE	1	2
		2 ft Lane Bank by LOI, DEBBIE	2 6:21	*13-15	Sub In: SMITH, ALISON Out: MASSEY, MIRANDA		
		LOY, DEBBIE, 2 Free Throws made both	2 6:21			1-1	100% 7-20 35.0%
		Foul on REXROAT, KELLY	2 5:48	13-17*	8 ft Left Side Jump shot by SMITH, ALISON	1	2
		Sub In: POPPLEWELL, JILL Out: REXROAT, KELLY	2 5:27	*15-17	Foul on BRITT, JAMIE		
			2 4:45		Sub In: MASSEY, MIRANDA Out: HIBBITT, RHONDA		
			2 4:27				
			2 4:15	15-19*	16 ft Right Side Jump shot by ELROD, HEATHER Assist by COLE, TRACY	3-7	42.8% 8-23 34.7%
			2 3:48			1	3
			2 3:36		Foul on ELROD, HEATHER		
			2 2:42	15-21*	12 ft Right Side Jump shot by COLE, TRACY Assist by MASSEY, MIRANDA	1-3	33.3% 9-26 34.6%
			2 2:36			2	4
		REB: 9 A: 3 BLK: 6 TO: 9 PF: 5 S: 2 FT: 2-2 100% FG: 6-14 42.8%	No. 1 RUSSELL COUNTY		REB: 16 A: 4 BLK: 0 TO: 5 PF: 3 S: 3 FT: 3-4 75.0% FG: 9-26 34.6%		
			2 2:36		Sub In: TALLEY, S. Out: BRITT, JAMIE		
			2 2:16		Foul on SMITH, ALISON	1	4
			2 1:50				
			2 1:47	15-23*	14 ft Left Side Jump shot by TALLEY, S. Assist by ELROD, HEATHER	1-1	100% 10-27 37.0%
			2 1:15	15-25*	14 ft Left Base Line Jump shot by COLE, TRACY Assist by SMITH, ALISON	2-4	50.0% 11-28 39.2%
			2 0:37	15-27*	4 ft Lane Follow by TALLEY, S.	1	6
			2 0:06			2-2	100% 12-30 40.0%
			2 0:06	15-28*	MASSEY, MIRANDA, 2 Free Throws missed 1st made 2nd	2-4	50.0% 4-6 66.6%
			2 0:00				
			2 0:00		Rebound by SMITH, ALISON	D-1	Tot-1 D-1 Tot-20

FIRST HALF SHOT CHART Produced by the KHSAA Sweet Sixteen Stat Crew with FINAL III - a Product of LEXICON SPORTS™



RUSSELL COUNTY					
Player			Player		
20 - LOY, DEBBI	4 / 6	66.6%	42 - POPPLEWELL	0 / 1	0.0%
50 - HIGGINBOTH	1 / 5	20.0%	44 - MORRIS, COU	1 / 1	100.0%
33 - REXROAT, K	0 / 1	0.0%			
22 - BECK, DUCH	0 / 3	0.0%			
34 - McFARLAND,	0 / 1	0.0%			
Layups	1-9 Ft	10-15 Ft	Over 15 Ft	3 Pointers	Total
	5 / 11	0 / 2	0 / 1	1 / 4	6 / 18
	45.5%	0.0%	0.0%	25.0%	33.3%

WARREN EAST					
Player			Player		
30 - ELROD, HEA	3 / 8	37.5%	34 - FISHBACK, T	1 / 1	100.0%
42 - BRITT, JAH	2 / 7	28.5%	44 - COLE, TRAC	2 / 5	40.0%
14 - SMITH, ALI	1 / 3	33.3%	54 - TALLEY, S.	2 / 2	100.0%
20 - HASSEY, MI	1 / 3	33.3%			
12 - HIBBITT, R	0 / 1	0.0%			
Layups	1-9 Ft	10-15 Ft	Over 15 Ft	3 Pointers	Total
	0 / 2	5 / 16	5 / 8	2 / 3	0 / 1
	0.0%	31.3%	62.5%	66.7%	0.0%